

A PLAT OF JUPITER NARROWS

PHASE B

GOMEZ GRANT MARTIN COUNTY, FLORIDA

I, Louise V. Isaacs,
Clerk of the Circuit
Court of Martin County,
Florida, hereby certify
that this Plat was filed
for record in Plat Book
4, Page 95, Martin
County, Florida, Public
Records, this day
of _____, 1985.

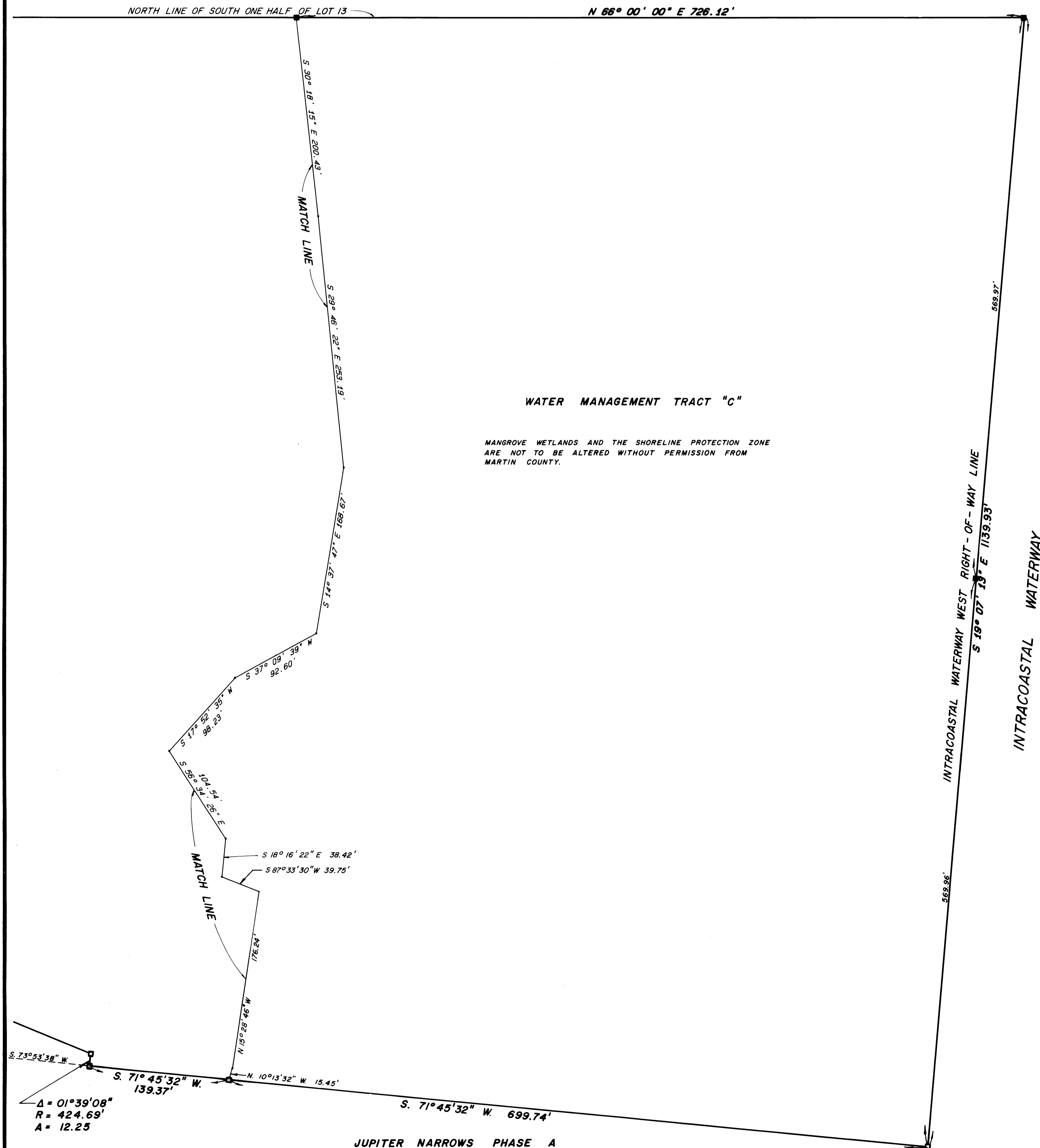
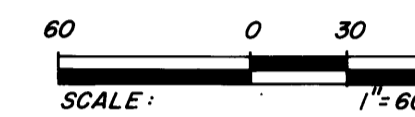
Louise V. Isaacs, Clerk
Circuit Court
Martin County, Florida

By: _____
Deputy Clerk

File No. _____

(Circuit Court Seal)

MARCH, 1985



- LEGEND**
- - FOUND P.R.M. (PERMANENT REFERENCE MONUMENT)
 - - P.R.M. (PERMANENT REFERENCE MONUMENT)
 - - P.C.P. (PERMANENT CONTROL POINT)
 - U.E. - UTILITY EASEMENT
 - M.E. - MAINTENANCE EASEMENT
 - D.E. - DRAINAGE EASEMENT
 - L.A.E. - LIMITED ACCESS EASEMENT

BEARING BASE
THE EASTERLY RIGHT-OF-WAY LINE
OF FIRST AVENUE IS TAKEN TO BE
N. 24° 00' 00" W. AND ALL OTHER BEARINGS
ARE RELATIVE THERETO.

LINDAHL, BROWNING, FERRARI & HELLSTROM, INC.
Consulting Engineers, Planners & Surveyors
JUPITER, FLORIDA STUART, FLORIDA
FORT PIERCE, FLORIDA

3 3